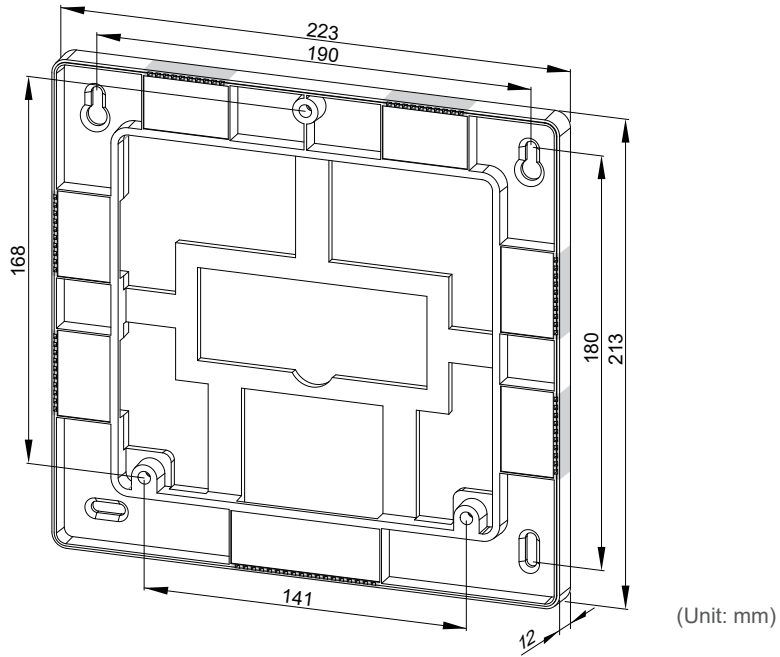


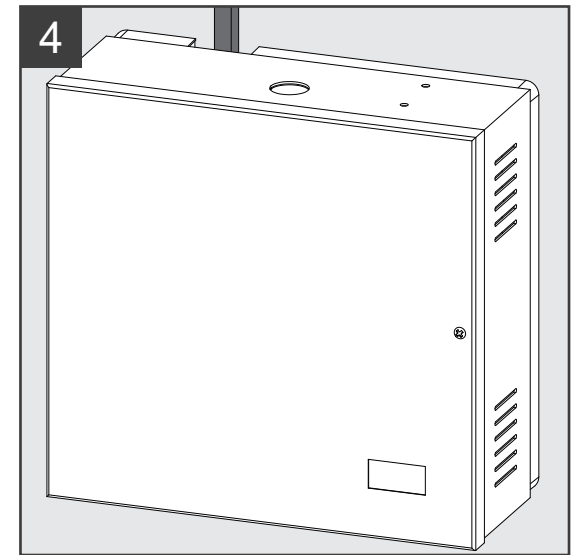
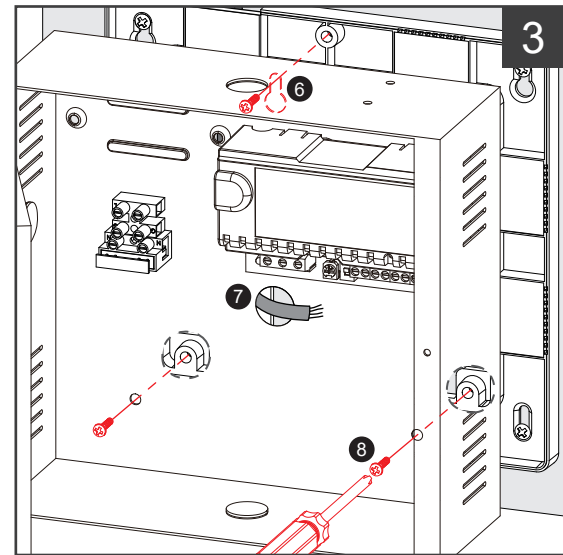
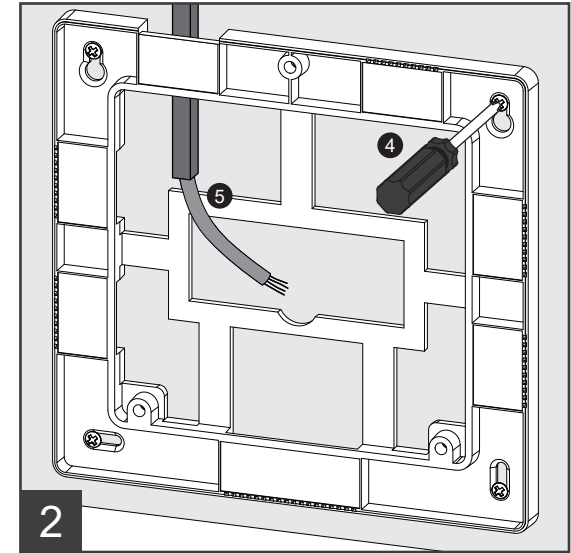
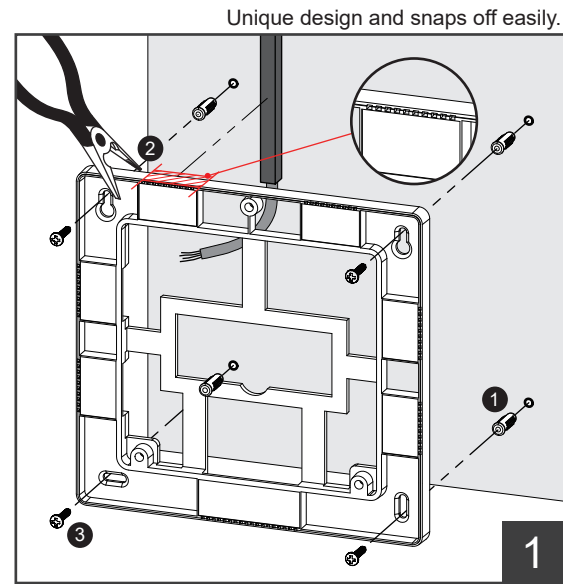
# ABP-100

## Power Supply Mounting Bracket Installation Instructions



The mounting bracket is suitable for wall installations where wires are exposed. The mounting bracket makes installation and wiring quicker and easier and allows wires to be connected to the power supply from all sides.

■ Tools required: Pliers, Phillips screwdriver and screws.



**Figure 1** Drill holes on the wall as shown in ① and rotate or adjust the mounting bracket according to the location of the power cable. ② Snap off the removable parts of the board using pliers and pass the power cable through. ③ Install wall plugs and fix the mounting bracket with screws.

**Figure 2** ④ Tighten the top row screws before fixing the bottom row. ⑤ Position the power cable in the center, ready for connecting with the power supply unit.

**Figure 3** Secure the top screw into the mounting bracket per shown in ⑥ and attach the power supply unit. Pull the power cable through the center hole per ⑦ and screw top and bottom screws per ⑧. Tighten these three screws to complete installation.

**Figure 4** Complete the wiring for the power cable per installation instructions of the power supply unit.