

Outswing doors with a narrow frame/header

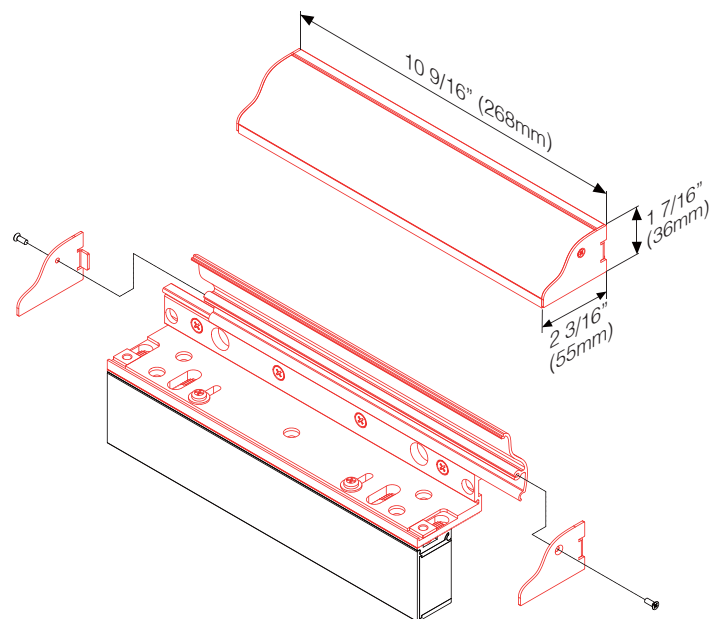
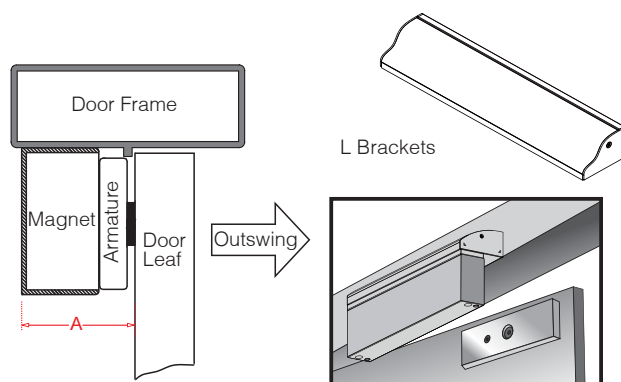
L-AXM-800AU Bracket

The A value in the table below shows the minimum required depth of the door frame for different electromagnetic lock models.

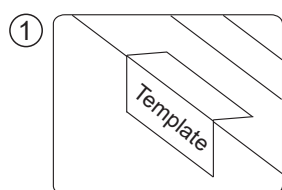
Magnet Grade	A Value	Optional Brackets
● 800 LBS	48 mm	L-AXM-800AU
1200 LBS	60 mm	L-AXM-1200AU



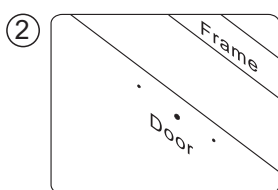
Applicable model (s): AXM-800 Series



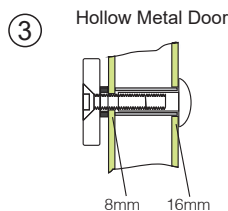
Installation of an L Bracket on Outswing Doors



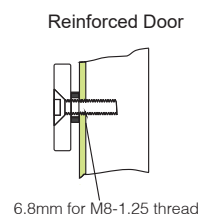
1 Fold the mounting template 90° angle along the dotted line.



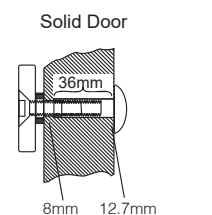
2 Drill the holes marked on the template.



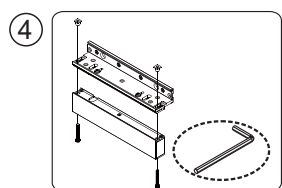
3 Hollow Metal Door
Drill a hole 8 mm in diameter through the door. Enlarge the hole to 16 mm from outside.



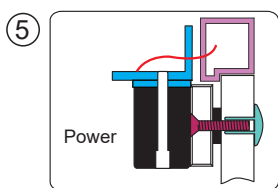
3 Reinforced Door
Drill a hole 6.8mm in diameter from inside. Screw with a M8-1.25 thread.



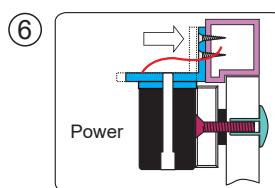
3 Solid Door
Drill a hole 8mm in diameter through the door. Enlarge the hole to 12.7mm from outside. The thickness of the door is 36mm.



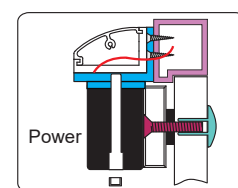
4 Assemble the electromagnet and L bracket with an Allen wrench.



5 Connect the lock wire to a power source. Let the electromagnet and the armature plate bond together. Press L bracket against the door frame.



6 Fasten the L bracket on the door frame.



7 Bench test the unit to complete installation