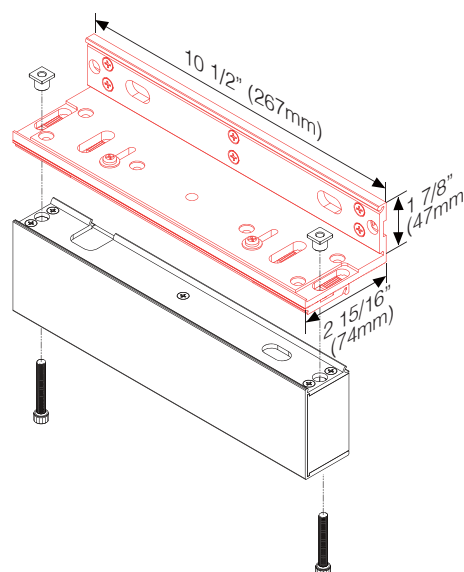
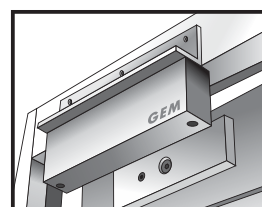
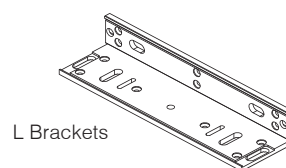
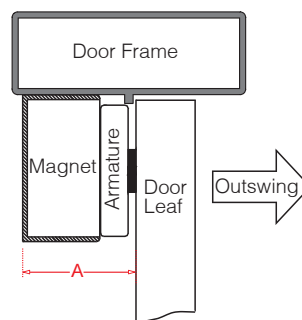


## Outswing doors with a narrow frame/header

# L-AXM-1200 Bracket

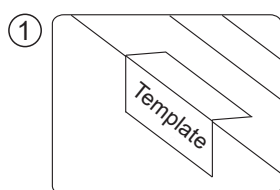
The A value in the table below shows the minimum required depth of the door frame for different electromagnetic lock models.

Magnet Grade	A Value	Optional Brackets
800 LBS	48 mm	L-AXM-800
● 1200 LBS	60 mm	L-AXM-1200

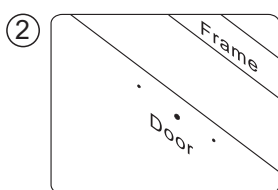


Applicable model (s): AXM-1200 Series

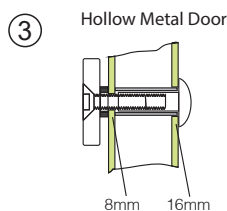
### Installation of an L Bracket on Outswing Doors



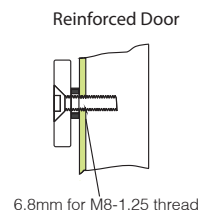
Fold the mounting template 90° angle along the dotted line.



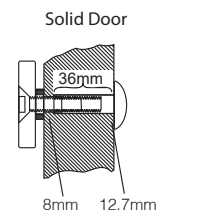
Drill the holes marked on the template.



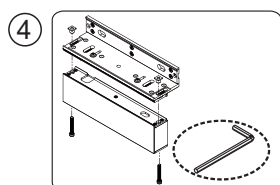
Drill a hole 8 mm in diameter through the door. Enlarge the hole to 16 mm from outside.



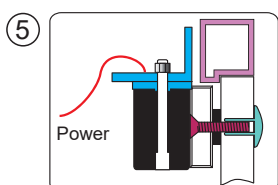
Drill a hole 6.8mm in diameter from inside. Screw with a M8-1.25 thread.



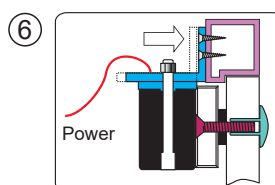
Drill a hole 8mm in diameter through the door. Enlarge the hole to 12.7mm from outside. The thickness of the door is 36mm.



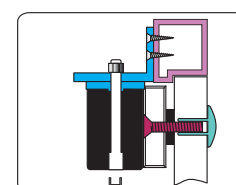
Assemble the electromagnet and L bracket with an Allen wrench.



Connect the lock wire to a power source. Let the electromagnet and the armature plate bond together. Press L bracket against the door frame.



Fasten the L bracket on the door frame.



Bench test the unit to complete installation