

Electromechanical Mortise Lock

GML800 Series

Safe, Secure, Easy to Operate



The GML800 series is an electromechanical mortise lock ideal for a wide range of applications and available with various monitoring functions. It can operate standalone or can be readily integrated into sophisticated access control systems.

Standard Features

- Field reversible latchbolt to suit left hand (LH) and right hand (RH) doors
- Field changeable fail-safe/fail-secure mode
- Monitoring options: Lock status, Request-to-Exit/Enter (inside/ outside lever rotation), Door status
- Enudrance rating 10, 000 cycles UL tested, 250, 000 cycles factory tested
- Cylinder & keys included and 3 lever set options available

Specifications

- Operating Voltage: Dual voltage 12/24 VDC
- Current Draw: 600mA/12VDC, 300mA/24VDC
- Temperature: +14° to 113°F (-10° to +45°C)
- Humidity: 0 to 95% Non-Condensing
- Backset: 2 3/4" (70mm) standard
- Monitoring Outputs:
 - Door Status, 1A/40VDC
 - Request-to-Exit/Enter, 1A/40VDC
 - Lock Status, 1A/40VDC
- Finish: Brushed stainless steel (US32D)



Optional Electrical Accessory



DL-360TB

Armored Door Loop with PC Board + Terminal Block Connector

GML800 Series Electromechanical Mortise Lock

| Models | Voltage (VDC) | Monitoring Options | Lever Options |
|-------------------|---------------|--------------------|------------------|
| GML800 | Dual 12/24 | M, MDS | — |
| GML800-SET | Dual 12/24 | M, MDS | L811, L812, L814 |

M: Lock status and Lever (Request-to-Exit/Enter) monitor

MDS: Door status, Lock status and Lever (Request-to-Exit/Enter) monitor

GML800-SET with Lever Options



GEM800-SET with L811 Lever Option

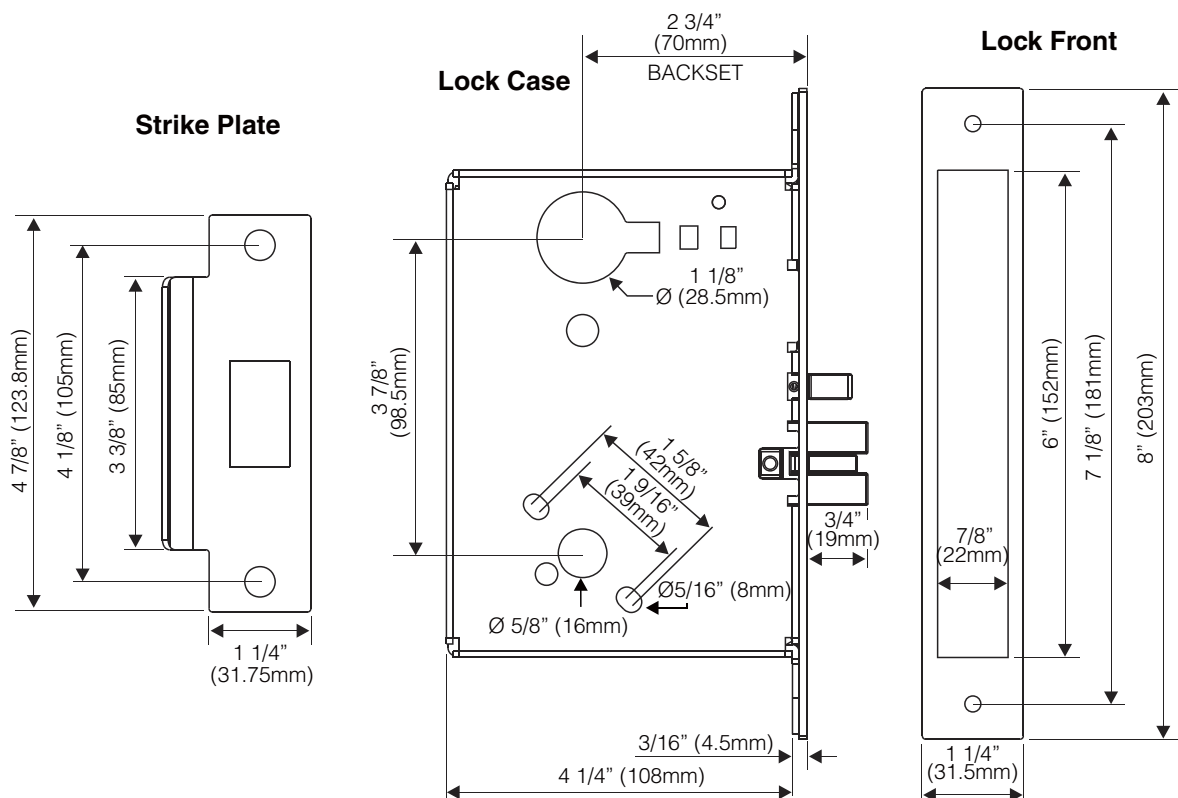


GEM800-SET with L812 Lever Option



GEM800-SET with L814 Lever Option

Dimensions



Warranty

The product is warranted against defects in material and workmanship while used in normal service for a period of 3 year from the date of sale to the original client. The ANXELL policy is one of continual development and improvement ; therefore ANXELL reserves the right to change specificaions without notice.